

MCL-T,17B Woodford Road, London E18 2EL, UK
+44 7796 266 055
phantoms@mcluk.org
www.mcluk.org



MCL Technology Limited
sam-phantom.com

MCL-T IEC62209-2 tank phantom

This is an elliptical tank phantom, with base dimensions 60 x 40 cm. The depth is 20 cm, and the 15 cm minimum fluid fill depth is marked.

Construction is from low-loss, low-permittivity material; the base is a specially-chosen rigid material that allows us make a large phantom with minimal sag even when filled with high-density phantom fluid. This also allows us to provide a range of base thicknesses to customers' requirements. Standard thicknesses are 2, 3 mm and 6 mm with a tolerance of 0.2 mm, other thicknesses available on request.

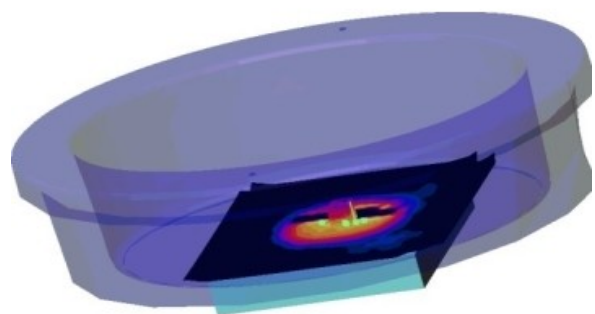
It can be supplied with a specially-designed supporting table with non-metallic construction.

The phantom has an associated CAD file describing its dimensions, to allow computational modelling in parallel with assessment.

It is fully-compatible with the SPEAG DASY 4 measurement system and a version is available that meets the requirements of IEC 62209-2.



Tank phantom in use



Tank phantom SAR scan